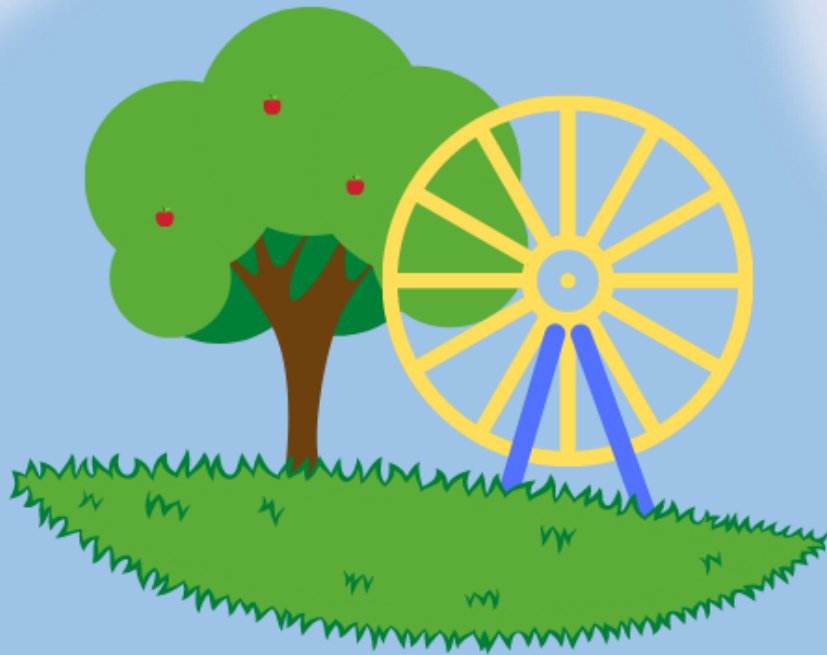




Ofsted

Good
Provider



Linton Primary School

Welcome to Linton Primary School

Linton Primary is a medium sized village school in South Derbyshire. The school occupies a large and attractive site with the main building having been added to over a number of years.

We presently have three classrooms within the main building plus the ICT Suite, offices, resource rooms and a hall where dinners are served daily from the school's kitchen. There are also four large classrooms in a separate block, a purpose built Early Years' building and a large school sports hall. In addition, we have a newly built (2019) KS2 block which houses our Years 5 and 6. All classrooms are equipped with interactive whiteboards and PCs or laptops. We also have a classroom set of Ipad's which are used for children to access learning apps such as Mathletics and Lexia. The school is fortunate to have a large field, playground, gardens and mature nature area.

The school's pupils, aged 3 to 11, come mainly from the villages of Linton and Castle Gresley and we currently have approximately 290 children on roll including Early Years (Nursery). Most of our children start in the Nursery and progress through the main school. In Early Years and Key Stage 1 we currently have five classes and in Key Stage 2 we also have five classes.

We hope this prospectus will give you flavour of 'life at Linton'.

We look forward to meeting you and your family,

Kind Regards

Mrs Catherine Hollis
Head teacher



"The staff are amazing and take time to get to know each child individually"

Parent Feedback

"Adults plan all aspects of learning carefully. This includes learning through well-structured activities outdoors. Activities directed by adults often encourage children to develop their learning by making choices."

Ofsted Feedback

Visions & Values

Our Vision

Where children are nurtured and encouraged to become aspirational, successful and confident.

Our Values

We believe in kindness, respect, positive attitudes and equal opportunities.
We will promote enthusiasm and enjoyment of learning.
We work as a team and encourage everyone to 'aim high'.

Our Aim

Working in partnership with parents and families we aim...

To develop an understanding of the wider world, promoting respect and tolerance of other faiths, cultures and ways of life.

To provide opportunities for children to become 'well-rounded', independent young people, with the necessary skills and attributes for future life.

To promote high expectations, enabling children to achieve their potential in a safe, caring environment.

Respect, Enjoy, Achieve



Linton Law



Aim High



Use good manners always



Be kind to everyone and everything

School Day

School Times

The school day is from 8.40am to 3.00pm

The main courtyard gate is open from 8.25am for morning drop off and at 2.55pm for afternoon collection.

Break and Lunchtimes

Break and lunch times are always fun at Linton! We have a large range of activities for children of all ages to enjoy such as football, basketball and pogo sticks as well as our Ninja Trail and nature area. Lunchtimes are between 11:45am - 1:00pm.

Forest School

Linton Primary School is proud to be a Forest School. Forest School inspires children of all ages to explore the natural world first-hand in all weathers, through the changing of the seasons, developing a personal and hopefully a lifelong connection to nature and a healthy respect for the natural world.



Clubs

We offer a Breakfast club starting from 7.30am and an After school Club which runs until 5.30pm. Children will also be given an opportunity to take part in a variety of extra curriculum clubs after school to suit all tastes and abilities. These include gardening, art, dance and Starbooks Reading Cafe.

Rewards

The school follows a reward stamp card system. Children collect stamps each time they complete good work or for good behaviour. When they have collected 10 stamps, they visit Mrs Hollis to receive a prize.

Celebration Assembly

Every Friday, we hold our Celebration Assembly. This is an opportunity for the whole school to come together to celebrate our achievements inside and outside of school. Each week, the class teachers award a class superstar, bookworm and handwriting winner. At the end of each term and school year we also have Super Student awards and a special Head teachers award, where parents are invited to assembly to celebrate. These are always kept top secret so the children have no idea!



Curriculum

We aim to provide our children with as wide a curriculum as is possible so that they may use the skills which they acquire in many ways. We encourage every child to realise their full potential - to draw on strengths and develop any areas of difficulty. All areas of the curriculum and all aspects of school are offered to all children.

The curriculum is divided into three stages:

Early Years Foundation Stage - Nursery and Reception (ages 3-5)

During the Early Years Foundation Stage we aim to show our children that learning, and school are fun!

We endeavour to build positive and supportive relationships with all parents in order for us to effectively provide for your child's individual needs and provide the best quality start to their school journey.

KS 1 (ages 5-7) and KS 2 (ages 7-11)

We have a variety of same and mixed age group classes at Linton. This allows our children to learn new skills and experience the benefits of a challenging national curriculum.

We aim to provide a broad and balanced curriculum and try to ensure that children's learning matches their capabilities. We offer a mastery approach in all subjects with challenge and support for children where necessary.



Nursery

The Nursery at Linton Primary offers a balance of high quality early education for children aged 3 years upwards within a nurturing and caring environment.

Staff are highly qualified and experienced within early years' education and the Nursery also benefits from having specialists in Maths, English and Special Educational Needs and Disability on hand within the school community.

We work closely with the parents and families of children in our Nursery to support the differing needs of each child, aiming to ensure that the transition to school is as seamless and stress free as possible.

We have strong links with local childminders, working in close partnership to ensure a smooth transition.

School Meals

Our school meals are freshly prepared each day, on site by our wonderful catering team. They provide an Autumn/Winter and Spring/Summer menu which offers fresh, nutritionally balanced meals. Each day children have an opportunity to try new foods alongside a selection on favourites to make sure we suit all tastes.

Our catering team can cater for any specific dietary requirements and staff are all trained on allergens.



Packed Lunches, Snacks and Drinks

Children are also welcome to bring in their own packed lunch and we encourage them to be nutritious and healthy.

Snacks are provided for children in Reception, Year 1 and 2 under the free fruit snack scheme. From Year 3, they can bring in their own healthy snack to eat at break times.

All children are encouraged to bring in a bottle of water each day and these can be refilled throughout the day.

Free School Meals

All children in Reception, Year 1 and Year 2 are entitled to a Universal free school meal. Children in Years 3 and above may also be entitled to a free school meal, if they are eligible. Please ask at the School Office for more details.



Visit the My School Lunch website to see the current menus.
myschoollunch.co.uk/derbyshire/primary-schools

Getting Involved

You will be given plenty of opportunity to come into school throughout the school year to join in and see what your child has been learning, these include:

- Meet the Teacher
- Head teacher Award Assembly
- Parents Consultations
- Grandparents Lunch
- World Book Day - Lets all read together
- Various classroom showcases
- Parents Forum - come join us for a cuppa and chat!



Friends of Linton

At Linton we have a group of parents and teachers who give up their free time to raise money for the school. Friends of Linton Primary organise and host many events throughout the school year including.....

- School Disco - Halloween, New Year and Summer
- Easter, Harvest and Christmas Bingo
- Enterprise Day

The money raised goes straight back into school to help fund projects such as...

- Lunchtime Play Equipment
- Starbooks Reading Café books
- Early Years play equipment
- Bike and scooter docks
- Termly WHSmith vouchers for each classes Head Teacher Award
- Subsidise School Trips (£3 per child, per year)
- Painting of outside areas (fences, benches, train)

Pupil Voice

Every Autumn Term we have inter-class voting to create our Pupil Voice council. The children have an opportunity to vote for their own class representative. Meetings are held at least once every half term and are, wherever possible, child led.

Pupil Voice at Linton is about empowering pupils to demonstrate thoughtful and responsible contributions to life at school. We show greater responsibility for our progress and achievement as well as engaging in communication with our peers and teachers.

We aim to improve our school by:

- Communicating
- Supporting
- Sharing
- Contributing
- Discuss / debate
- Making a difference



Admissions

To apply for a place at our school please contact Derbyshire County Council School admissions online at www.derbyshire.gov.uk/schools or by telephone on 01629 533190

To make an in-year application, contact school admissions as above and telephone the School Office on 01283 760382.

Contact Us

Linton Primary School
Main Street, Linton, Swadlincote
Derbyshire, DE12 6QA

Tel: 01283 760382

Email: office@linton.derbyshire.sch.uk

Headteacher: Mrs C. L. Hollis B.Ed Hons N.P.Q.H.



Our website contains statutory information along with all our latest news, class pages as well as resources to support home learning.

www.lintonprimary.co.uk



Follow us @lintonprimary



Like us @lintonprimaryschool

